

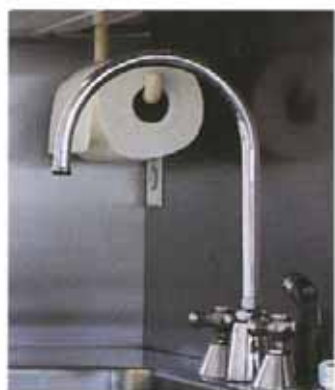
BIG IDEAS for SMALL SPACES

STUDIO
APARTMENTS

BY JAMES GRAYSON TRULOVE
IL KIM

ON THE TERRACE

Belmont Freeman



For his own apartment, the architect defied conventional real estate wisdom and converted a one-bedroom apartment to a studio. Since he lives alone and spends relatively little time at home, he has no need for multiple rooms and prefers to live in one open space.

To create this space, all walls were demolished. By removing the dropped plaster ceiling, the architect increased the height of the space and exposed an interesting pattern of beams. All existing base and cornice moldings were removed in an effort to simplify the space and eliminate visual clutter.

The apartment is blessed with a spectacular view and a terrace that is nearly equal in size to the interior, dramatically expanding the living space during warm weather.

Above: Kitchen detail.

Right: In the living area, a single, side-mounted lighting track runs the length of the room, allowing for flexible lighting of the owner's art collection.

Photography: Christopher Wesnofske

BIG IDEA:

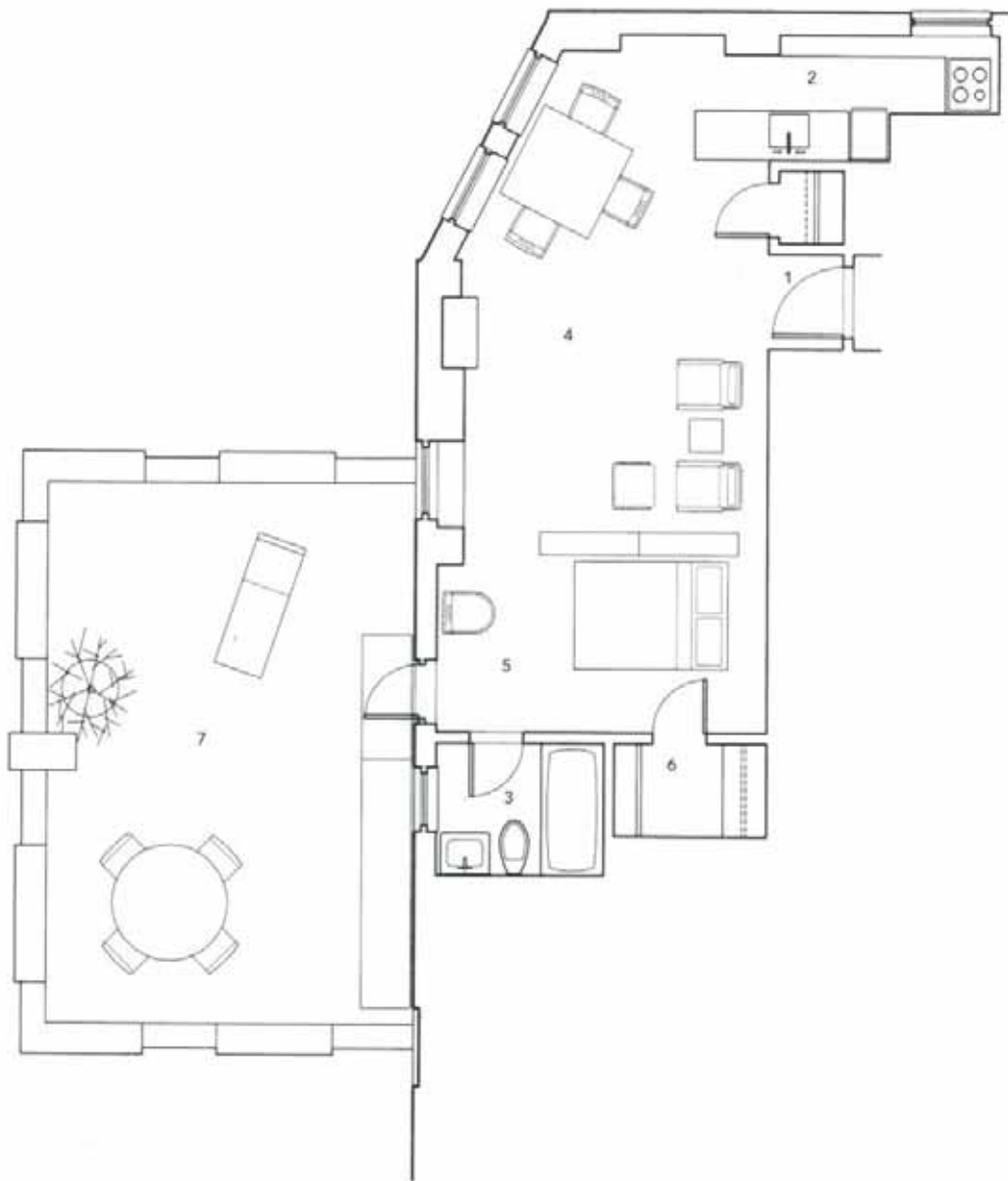
The architect-owner enjoys cooking and wanted a properly equipped kitchen. The building, however, was constructed as a residential hotel, and the original apartments had only small pantry units. Ingenuity and the most compact of appliances, such as an 18-inch-wide built-in refrigerator, were needed to produce an efficient, well-functioning kitchen. Custom-fabricated stainless steel kitchen counters were installed, cantilevered into the living area, expanding the usable work space and integrating the kitchen into the living space. Lighting consists of silver-tip bulbs in porcelain sockets, set into hemispherical recesses in the plaster ceiling.





Left in the sleeping area, the space divider is assembled from standard industrial shelving and fitted with custom fabricated drawers. The dining table (left) is made of birds eye maple and galvanized steel. The planter (center to the right) is by the architect, who is also an accomplished portrait sculptor.

RENOVATION PLAN



ORIGINAL PLAN



- | | |
|------------------|-------------------|
| 1. Entry | 5. Sleeping Area |
| 2. Kitchen | 6. Walk-in Closet |
| 3. Bath | 7. Terrace |
| 4. Living/Dining | |

Right: By using compact appliances, such as an 18-inch-wide refrigerator, the architect was able to create an efficient, well-functioning kitchen in a very limited space. The kitchen counters are custom-fabricated stainless steel. One is cantilevered to create more work space and to unify the kitchen with the living space.



Right: The terrace is nearly equal in size to the apartment, dramatically expanding the living space in warm weather.

